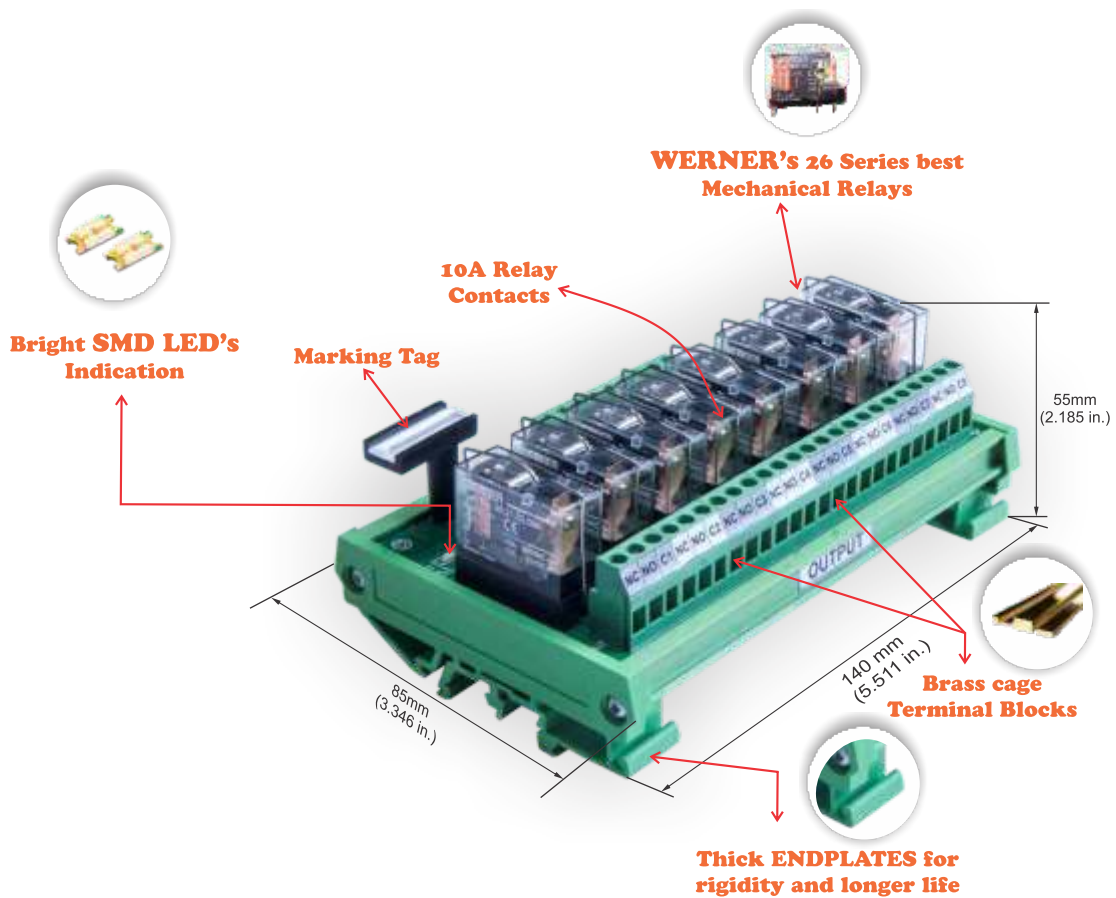


## PRODUCT SPECIFICATION

# WIN Series Interface Relay Modules



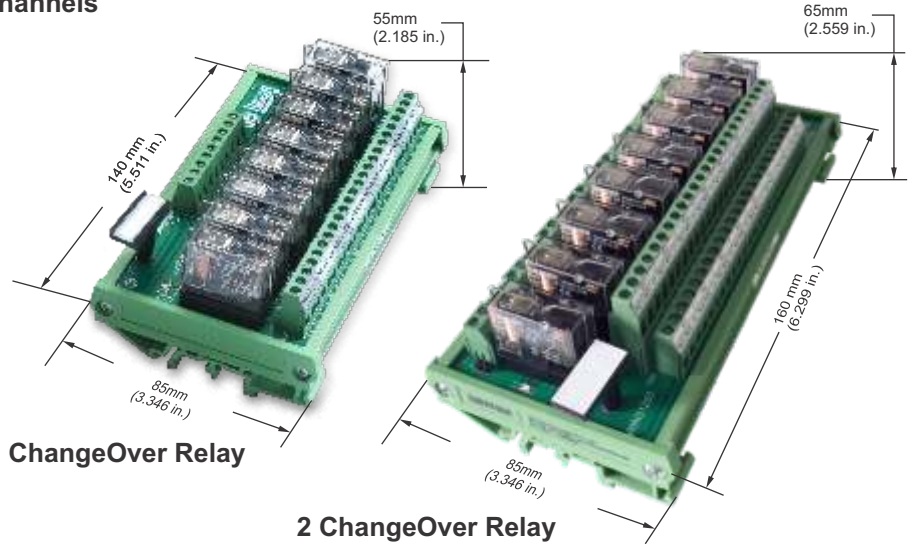
## Interface Relay Modules

1,2,4,6,8 & 16 Channels

# INTERFACES RELAY Modules

Our interface modules fulfill the most varied tasks. Whether in production engineering, for the electrical equipping of machines or in control engineering for power distribution, building automation and materials processing the main aim is to guarantee the exchange of signals between the process peripherals and the higher level control systems.

WERNER Relay Modules provide high density packaging of miniature general purpose relays, Double Pole Double Throw (2 FormC) contact configurations and low current AC and DC coils.



### Contact Ratings

Wire Range	Current	Voltage
0.5-4mm <sup>2</sup> 30-14 AWG	12A	240VAC/ 30VDC

### Contact Ratings

Wire Range	Current	Voltage
0.5-4mm <sup>2</sup> 30-14 AWG	8A	240VAC/ 30VDC

### Ordering Information

WIN 1 1 1080 D 024

Series	
WIN	

Input Type	
1	Common Negative
2	Common Positive
3	Individual with Jumper

Output Type	
1	Individual Output

Change Over	
1	1 Change Over
2	2 Change Over
4	4 Change Over

Coil Voltage	
012	12VDC
024	24VDC
048	48VDC
110	110VDC
230	230VDC

Voltage Type	
A	AC
D	DC

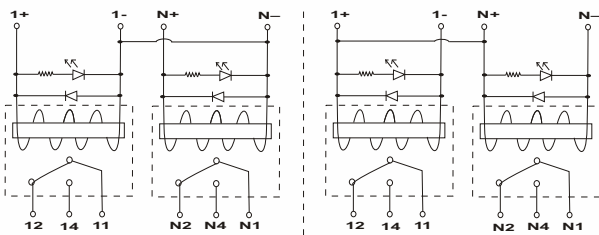
With Fuse	
1	With fuse
0	Without fuse

Channel	
01	1 Channel
02	2 Channel
04	4 Channel
06	6 Channel
08	8 Channel
16	16 Channel
32	32 Channel

## Wiring Diagram

### 1 ChangeOver Relay Modules 1,2,4,6,8 & 16 Channels

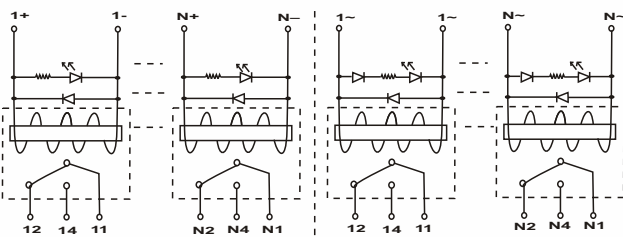
#### MODULE CIRCUIT



2=NEGATIVE LOOPING

1=POSITIVE LOOPING

N= 2, 4, 6, 8 & 16

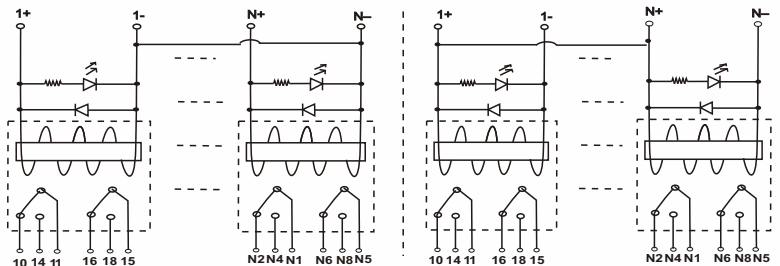


0=Bussed Individual

3=CONFIGURATION AC VOLTAGE

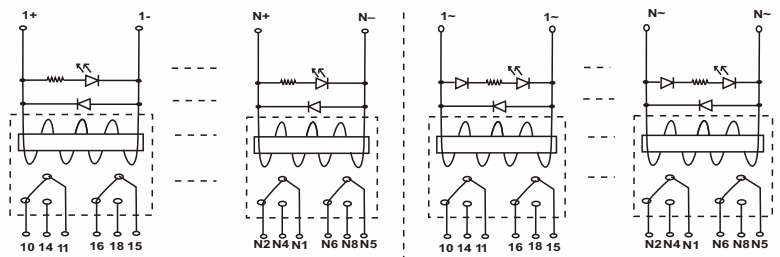
### 2 ChangeOver Relay Modules 1,2,4,6,8 & 16 Channels

#### MODULE CIRCUIT



2=NEGATIVE LOOPING

1=POSITIVE LOOPING



0=Bussed Individual

3=CONFIGURATION AC VOLTAGE

## Contact Specification

### Single Change Over Relay Modules: 5A

Relay Socket: 12A  
Terminal Blocks: 10A  
PCB Trace for Contact Circuit  
At 30°C (86°F) temperature rise NC: 5A  
Common and NO; 5A  
PCB Trace for Coil Circuit: 2A  
At 30°C (86°F) temperature rise

### Double Change Over Relay Modules: 2 x 5A

Relay Socket: 8A  
Terminal Blocks: 12A  
PCB Trace for Contact Circuit: 5A  
At 30°C (86°F) temperature rise: 5A  
PCB Trace for Coil Circuit: 2A  
At 30°C (86°F) temperature rise

## Relay Specification

### AC Coil Ratings

Voltage	Rated Current (mA) AC 60Hz	Coil Resistance (Ω)	Power Consumption (VA)	Operation Properties		
				Continuous Voltage	Pickup Voltage	Dropout Voltage
6V	150	16	Approx. 0.90	110% max. at 70°C (158°F)	80% max.	30% min.
12V	75	65				
24V	37.50	260				
110V	10.60	4600				
120V	7.50	6500				
220V	4.1	25000				
240V	5.30	30000				

±15% at 20°C

## DC Coil Ratings

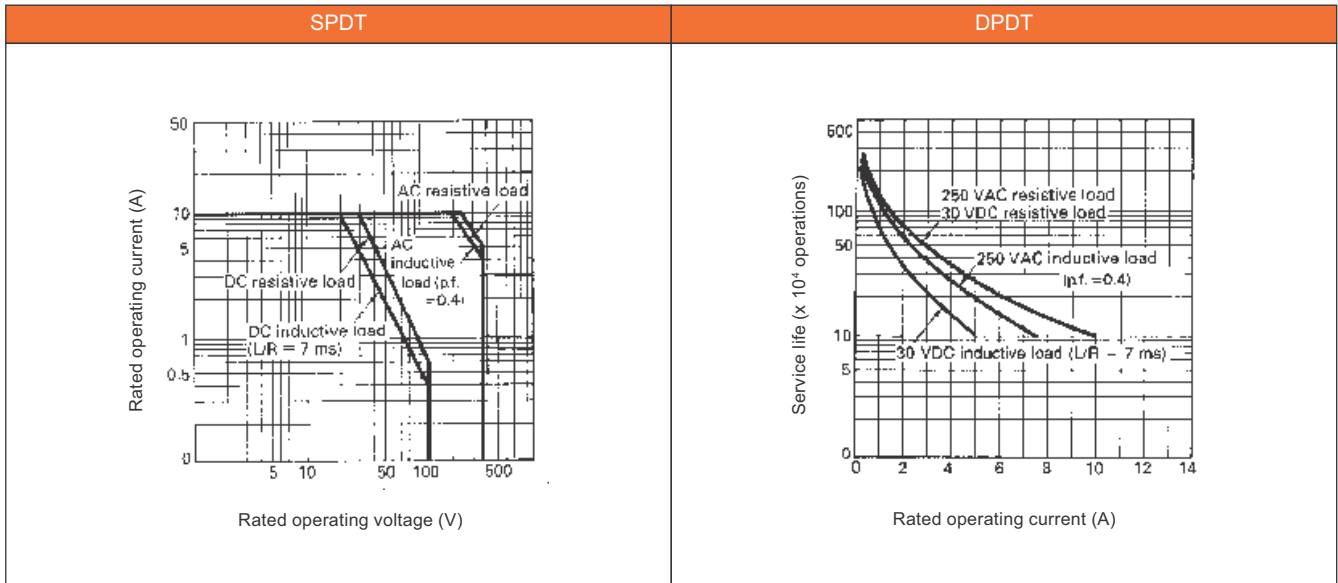
Voltage	Rated Current (mA)	Coil Resistance ( $\Omega$ )	Power Consumption (mW)	Operation Properties		
				Continuous Voltage	Pickup Voltage	Dropout Voltage
6V	88.20	68	Approx. 530	110% max. at 70°C (158°F)	70% max.	15% min.
12V	43.60	275				
24V	21.80	1,100				
48V	11.50	4,170				
110V	4.80	22,900				

±15% at 20°C

## Weight

Model No.	26.21 (SPDT)	26.22 (DPDT)	26.23 (SPST-NO)	26.24 (DPST-NO)
Weight (approx.)	17g	18g	15g	16g

## Relay Electrical Characteristics





# WERNER

Inventing Innovation...

**H.Q.**

**Werner Electric Private Limited**

Plot No.: 166, Hebbal Industrial Area, Mysore - 570016, India.  
Tel: +91 73539 47299, E-mail: info@wernerelektrik.com

**Werner Malaysia Sdn Bhd,**

45-2, Jalan Tiara 2B, Bandar Baru Klang,  
41150, Klang, Selangor, Malaysia.

Tel: +60 13 533 3348, E-mail: info@wernerelektrik.com

**Werner Elektrik Türkiye**

Ayazağa Mah. Mimar Sinan Sok. Seba Office Boulevard.  
D Blok. No.: 21D/45 Sariyer / İstanbul, Türkiye.

Tekefon: +90 539 829 25 07 , E-posta: info@wernerelektrik.com

[www.wernerelektrik.com](http://www.wernerelektrik.com)